

BLUE BERET STANDING CHAIR COMMITTEE REPORT

To: President Joe Perryman, Members of the IBT
and my fellow Airstreamers

From: Cecelia Stansbury, Blue Beret Standing Chairman

Date: June 26, 2015

Thank you Mr. President for the opportunity to continue to serve in this capacity. I enjoy reviewing the various newsletters submitted to the Corporate Office from units throughout the 12 Regions of WBCCI.

There seems to be some misunderstanding among our members regarding what my responsibilities are for this position. To clarify, my major job is to review all the unit and region newsletters for interesting articles and pictures that would apply to all members of our club. That is why it is so important for everyone to submit their newsletter to Julie Rethman at JRethman@wbcci.org at the Corporate Office for distribution to the leaders of the club, plus the Blue Beret Standing Chair. Also, if I find out about something interesting that has occurred in the club, it is my job to submit an article for possible publication. It is Corporate Office's job to compile the Blue Beret and make the final decisions of what is included.

If any member has an interesting story about their Airstream adventures or a fun caravan, please submit it to Julie Rethman for consideration. Or, if you feel it would better fit into the News and Views, submit it to Carolyn Beardshear at ecc@wbcci.net for the ECC's consideration. We all love to hear about other's experiences in their Airstream.

I also want to remind all members of the club to save their old Blue Berets as they make a great gift for a prospective member. What better way to share with others what WBCCI is all about. There are a lot of Airstreams out there and the Blue Beret is a good marketing tool.

I also enjoy assisting the ECC and Carolyn Beardshear with the News & Views.

Respectfully yours,

Cecelia Stansbury

To:

Joe Perryman, President

International Board of Trustees and WBCCI Members

We have again been working on the new budget for next year. To balance a budget seems to be getting harder every year because it just takes more money. At headquarters we have had additional expenses with the data updates, program changes plus other office expenses.

#525 Real Estate Taxes went up \$600. We can only assume that the valuation of property was increased to cause this change.

We budgeted for a new server at headquarters for the last 3 years and finally it was purchased this year. The new server is for use with FileMaker and had to have system specifications with options to produce the reports and criteria we need. However we are over budget (#540) but this cost will be depreciated over 3 years at the end of the fiscal year.

Salaries are down from the budgeted amount however payroll expenses (#551) are over budget. This was to pay earned vacation and additional pay to those who left the office which was an overlapping of employees.

I reported at Mid Winter IBT the Accounting expenses #586 were up because of the Audit that was required by the board when we had a change of Managers.

Good news is that membership is up over last year. I am sure the Membership Chairman will give us the numbers in her report.

All in all I think we are doing well and hope the next year will be good and we won't have any unexpected expenses.

Thank you Mr. President for asking me to serve another year as Budget Chairman. It is always a challenge to work with the unknown.

June Ryan

May 1, 2015

IBT Meeting, June 2015
Farmington, NM

To: INTERNATIONAL BOARD OF TRUSTEES

From: CARAVAN COMMITTEE CHAIRMAN, Chuck Kiple

Caravan Appreciation Dinner Scheduled: The annual no host Caravan Appreciation Dinner is scheduled for the evening of June 20, 2015. WBCCI members who have been involved in Unit, Region, or National Caravan activities during the year are recognized at the event. In addition, the support staff of the Caravan Committee is recognized for their service and contributions to the overall Caravan program.

National Caravan Leader and Committee Meeting Scheduled: A one-day discussion and training session for National Caravan Leaders and Caravan Committee members is scheduled for June 19, 2015. This meeting allows for the open exchange of ideas and the opportunity to ask questions and receive answers from some of the most experienced Caravan Leaders in WBCCI. A portion of the meeting is devoted to the training and utilization of the Caravan Website <http://wbccicaravan.wbcci.net>, which is a link on the Club's website. Each National Caravan Leader is instructed on how to customize and update the information on their individual caravan websites.

Introduction to Caravanning Seminar: The Introduction to Caravanning Seminar is being held on the afternoons of July 1, 2 and 3, 2015. We continue to evaluate the annual seminar regularly in order to keep the seminar sessions informative but also to introduce new subjects to the ongoing program. We encourage you to promote this seminar not only as a tool to develop caravan leaders but also as an encouragement and familiarization for new members to the adventure of club caravans.

Numbered Caravans Scheduled: As of 5/1/2015: 4 numbered Unit Caravans and 1 numbered Region Caravan are active for 2015, In addition 11 National Caravans are active for 2015, 12 National Caravans for 2016 and 8 National Caravans for 2017 are under development. Lists of these Caravans are attached.

Non-Numbered Caravans: In the usual course of the Committee's function we continually provide advice, assistance and information to the numerous non-numbered caravans that run throughout the year by WBCCI at both the unit and region levels.

Caravan Arrivals at Gillette: As of May 01, 2015, 7 Caravans have been assigned an arrival time at Gillette.

Caravan Website: The control of internet domain names for Airstream Caravan and Airstream Caravans,.com, .net and .org are being continued by the Caravan Committee since original registration in 2011. The caravan website wbccicaravan.wbcci.net continues to be very active, in the last 12 months the site has experienced 1,061,784 unique visitors and 3,104,318 pages displayed which is a 20 percent increase over the previous year.

Caravan Handbook: In accordance with Bylaws and Policy Article III, Section 1, Policy (c) the Caravan Committee is charged with updating and re-publishing the Caravan Handbook every five years. This has been accomplished and copies of the 2015 edition are now available in print on the Club Website and the National Caravan Website.

Sixtieth Anniversary: It has been a busy and fast ten years since August 17, 2005 when a 105 unit National Caravan in 3 sections with 200 plus WBCCI caravanners arrived in Kentville, Nova Scotia with past International President Jim and First Lady Janie Haddaway to dedicate a 50th Golden Anniversary plaque at WBCCI's founding site on August 3, 1955. We all had a great experience and a wonderful caravan. Happy 60th Anniversary to WBCCI!

**NATIONAL CARAVANS
2015 – 2016 – 2017**

2015

N-44-A1	VIKING TRAIL CARAVAN	Hilton
N-44-A2	VIKING TRAIL CARAVAN	Hilton
N-44-C	CANADIAN ROCKY MOUNTAINS	Leach
N-44-D	ROCKY MOUNTAIN HIGH USA	Leach
N-44-E	SOUTHWEST ADVENTURE	Glassey
N-44-H	GEORGIA PLANTATIONS AND MORE	Montague
N-44-I	NOR' X NOR'EAST	Walbridge
N-44-J	TASTE OF THE BLUE RIDGE	Matkovich
N-44-L	CAJUN COUNTRY CARAVAN	Boudreaux
N-44-M	SPINDLETOP	Kindle/Snow
N-44-N	ORES, SHORES, WATERS AND LIGHTS –EAST	DeLeeuw/Kiel

2016

N-45-A	NOR' X NOR'EAST	Walbridge
N-45-B	TASTE OF THE BLUE RIDGE	Matkovich
N-45-C	ALYESKA, THE GREAT LAND	Johnjullio
N-45-D2	THE VIKING TRAIL CARAVAN	Hilton
N-45-E	SOUTHEAST COAST SPECTACULAR	Carnien
N-45-F	SPRINGTIME IN KENTUCKY	Hilton
N-45-G	FLORIDA FANTASY	Skipper
N-45-H	SOUTHWEST ADVENTURE	Thompson
N-45-I	GONE TO TEXAS	Snow/Kindle
N-45-K	GEORGIA PLANTATION AND MORE	Montague
N-45-L	CAJUN COUNTRY	Boudreaux
N-45-M	AMERICAN REVOLUTION IN THE NORTHERN COLONIES CARAVAN	Jones

2017

N-46-A	GOLF – N- AROUND	Skipper/Blanchard
N-46-B	CANADIAN ROCKY MOUNTAINS	Leach
N-46-C	ROCKY MOUNTAIN HIGH USA	Leach
N-46-D1	VIKING TRAIL CARAVAN	Hilton
N-46-D2	VIKING TRAIL CARAVAN	Hilton
N-46-E	SPINDLETOP	Kindle/Snow
N-46-F	NOR BY NOR'EAST	Walbridge/Lake
N-46-G	SW ADVENTURE	Montague/Thompson

UNIT CARAVANS 2015

- U-415 Lake Superior Circle Tour 2015
Ontario Canada Unit
Kerry and Elizabeth Mattila
August 2 – 22, 2015
- U-416 Columbia River Gorge-Portland
Idaho Unit
Jerry & Linda Settle
Darrell & Maureen Ostyn
September 20 – October 3, 2015
- U-417 The Revolutionary War in the Hudson Valley
Metro New York Unit
Debbie & Mark Hammer
July 15 to July 25, 2015
- U-418 Traveling with Dick and Jane Part III -
The Carolina's
Northern Virginia
Dick & Jane Arnold
May 3 – 14, 2015

REGION CARAVANS 2015

- R-283 Silver Trails to New Mexico
Region 7
Linda Agre
June 13 - 23, 2015

“Busy” doesn’t begin to describe the Electronic Communications Committee these days. Since Lori Plummer became Corporate Manager we have been working with her on a daily basis to implement technology that will improve efficiency at the Home Office and provide WBCCI members with more convenient and effective means to communicate with their club.

What we have accomplished:

- Publication of two issues of the Digital Membership Directory in December and March. Both have been well received and downloaded by 1500 members. The digital directory is created almost instantly by the new Filemaker database, thanks to Jim Cooper’s expertise and perseverance.
- A meeting of three ECC members at the Corporate Office in order to review of the new WBCCI database, install a new server and enable remote server access for ECC members
- Continued publication of the electronic newsletter, “News & Views,” which is emailed to all WBCCI members
- Assisted Jim Cocke in the analysis of 5000 members’ survey comments for distribution to club leaders.
- Upgrading backend software of the club’s main website, wbcci.org
- Continuing maintenance of wbcci.net (Unit and Region websites) and support for webmasters
- Promotion of the Farmington Rally through farmington.wbcci.net and the Farmington 2015 Facebook Page. Research and development of a text messaging system at the International Rally (lead by Harold Higgins). We should note that the WBCCI Facebook page, administered by Rich Walbridge now has 1243 members.

We couldn’t wait until June to meet Lori in person so Jim Cooper, Damon and Carolyn traveled to Jackson Center in April to begin work on improvements in technology usage that include the following:

- Online renewal of dues OPTION for all members – we are close!
- Increase the efficiency and productivity of the Home Office staff by smart use of technology to eliminate redundancy and reliance on paper copies

- Individual online profiles for members to maintain their own contact information, increasing the accuracy of our mailing lists
- Better reporting of data for use at the International Rallies, leading to simplification of parking and registration processes.
- Allow treasurers the option of completing a spreadsheet to submit membership information to the Home Office, instead of multiple forms
- Automatic renewal notices sent to all members, directly from the database
- Devise a mechanism for members to search online for available membership number
- Institute generic email addresses for International, Region, and Unit Officers (i.e. president@wbcci.org, U041treas@wbcci.net) to facilitate communication from members to club leaders
- Research and implement a text messaging system for schedule changes and program updates at the Farmington Rally. This system can be available for use with many club rallies in the future.

The ECC would like to thank Jim Cooper (Denco Unit) for spending 5 days of his time – during fishing season! – traveling to Jackson Center, Harold Higgins (NorCal Unit) for his work on the International Rally text and email messaging system, and Joe Perryman for providing the strong leadership, commitment to progress, and continual encouragement that made all these advances possible.

Working with Lori Plummer has been a joy for the ECC. We feel we have a variety of expertise on our team and a shared goal of helping WBCCI grow and prosper.

Respectfully submitted,
The Electronic Communications Committee

Damon Beals #4827, Chairperson
Carolyn Beardshear #7982
David Boyd #15566
Jim Cooper #3056
Tim Kendziorski #17330
Eric McHenry #2242
Debbie Wood #4822



the AIRSTREAM RV Association

Committee Report G

Farmington, NM

June 25th, 2015

To: Joe Perryman, WBCCI International President
International Board of Trustees
Members

From: Barry Heckenswiler, Chairman
Ethics & Grievance

Date: April 30th, 2015, for 2015 International Board of Trustees Seminar/Meeting

No grievances are pending before the Ethics & Grievance Committee at this time.

I want to thank President, Joe Perryman for the opportunity to serve as Chairman of the Ethics & Grievance Committee.

Respectfully Submitted,
Barry Heckenswiler

Barry Heckenswiler, Chairman

Chuck Kiple, Member

Wilson Yerck, Member

Date: June 2015

To: International Board of Trustees

From: Linda G. Amme, Chairman of Youth and Family

The Youth and Family Committee is planning another great rally in Farmington. We will again be sponsoring a youth for the Common Cents Program. Stuffed animals will be collected to go to several agencies for their use with children in need. The tab program will again be supported for the Ronald McDonald House.

We are looking forward to meeting the young families this year. With the lower numbers, we will hopefully have time to talk with them about some of their concerns which will be reported in the July report. We are looking forward to next year when the rally will be in a location where the east coast families will be closer. Schools are again not getting out until the 23rd to the 25th of June.

It does not appear at this time that the teen queen program will be revived as the number of teens is not sufficient to support the program.

We continue to hear from families that they are not wanted at local unit activities as their children are disruptive to the activities preferred by the older participants. This seems to be a constant problem as the activities are not geared to include the families. Some units state that they do have one rally where the grandchildren are welcome.

I am available to talk with anyone about ideas for rallies that would include young families and children.

Thank you for the opportunity of serving this club this year.

FARMINGTON, NEW MEXICO
JUNE 25, 2015

INTERNATIONAL RELATIONS

Date: April 12, 2015
To: Joe Perryman, International President of WBCCI
From: Jim Elmlinger, Standing Committee Chairman, International Relations '07 – '15
Subject: Committee Report for the June 25, 2015 Summer IBT Meeting

There have not been any applications for WBCCI foreign travel caravans at this time.

I am resigning my position as WBCCI International Relations Standing Committee Chairman and I further recommend that the position be retired as the Club, as it exists today, is, sadly, no longer capable of attracting enough participants to make overseas caravans viable.

A good yardstick to make the point for the retirement of this position is the last WBCCI overseas caravan, which went to New Zealand in 2012 and included an add-on to the Australia Island State of Tasmania. There were numerous options for taking this overseas adventure from as little as 30 days up to 90 days, which should have made it well within our members time constraints and budgets. Despite having a list of over 100 WBCCI memberships (200 people) signing up as interested and making any USA International Caravan Association (ICA) members also eligible to travel with their WBCCI friends, the caravan only became viable because two-thirds of the 15 participating caravanning RVers were from overseas ICA. The five United Kingdom ICA members, coupled with the five New Zealand ICA members are the one and only reason this caravan was able to run. Furthermore, there was only 1 WBCCI couple from the above-mentioned initial list of interested participants that actually participated went on the caravan.

We will not have a representative from the International Caravanning Association (ICA) in attendance at this International Rally.

As of this writing Sally and my Airstream motorhome is up for sale and hopefully has been sold by the time of the IBT meeting. Even though we are WBCCI life members, we are now forced out of the Club, as we have signed a contract to purchase a different Thor product, a 2016 Tuscany motorhome.

Respectfully submitted,



Jim Elmlinger, WBCCI #3296
Chairman WBCCI International Relations Standing Committee

cc: R. B. Bernd, WBCCI #306,
WBCCI International Relations Standing Committee member

TO: Joe Perryman
International President

RE: Legislative Committee Report

1. One major debate in congress concerns the Infrastructure problems throughout the USA. Some states have taken the problem upon their selves to correct. For instance Iowa has increased the gas tax by \$.10 per gallon. This money is partially returned to areas in the state to fund projects needing replacement whether roads or bridges. Diesel fuel has also had the same tax increase.

Public-Private-Partnership, (P3's,) is being studied by the House of Representatives. The funding for projects would still come from tax payers, but the reasoning is that projects with high costs and technical problems would benefit from the partnership of private concerns.

Finally, if the state is Republican controlled, no new taxes are proposed to pay for infrastructure repair. If the state government is Democratic controlled, there seem to be many different taxes proposed to correct infrastructure deficiencies.

2. Many state and National Parks are considering how to make WIFI available. It is considered the "fourth" utility after electricity, water, or sewer. Even private RV parks are being asked first, "Do you have WIFI available?"
3. Import duty taxes are being exempted from speed limited specialty tires like ST type trailer tires. This is a result of the National Association of Trailer Manufacturers, (NATM,) and the Recreational Vehicle Industry Association, (RVIA,) making the exemption request. Most of these tires are imported from China. The tires must comply in other ways by permanently molding "For Trailer Service Only" on the sidewalls.
4. The new EPA rules on Ozone could result in several National and state parks to be in non-compliance. Yellowstone and Grand Canyon would be non-compliance.

Richard Jirus
International Legislative Chair

Lifetime Membership Fund Report

To:
President Joe Perryman
International Board of Trustees
Members of the WBCCI

The status of the fund is listed below:

Life Member Fund A/C #252
Statement of Account
As of March 31, 2015

Life Member Fund Accounts

	Interest Rate	Interest Paid	Maturity Date	Balance
US Bank Savings	0.0094%	Quarterly	NA	\$ 481.33
Peoples Federal CD #128	1.25%	Quarterly	07/22/18	\$ 55,000.00
Peoples Federal CD #139	2.02%	Quarterly	07/15/15	\$ 50,000.00
Life Member Fund Balance as of March 31, 2015			TOTAL	\$ 105,481.33

Added Life Members

No additions	Amount
	\$ -
TOTAL	\$ -

Interest Earned

	Amount
US Bank Savings	\$ 0.24
Peoples Federal CD #128	\$ 1,003.52
Peoples Federal CD #139	\$ 4,131.82
TOTAL	\$ 5,135.58

Total Life Member Fund

GRAND TOTAL \$ 110,616.91

Life Member Annual Dues

Year Life Membership Started	Due Rate	Members Renewing	Amount	Note: Life Member Fund owes General Fund \$6,730.00. Due to not breaking CD and losing interest.
upto 1994	\$ 35.00	173	\$ 6,055.00	
1995 to 2005	\$ 45.00	194	\$ 8,730.00	
2006 to 2010	\$ 55.00	20	\$ 1,100.00	
2011 to Current	\$ 65.00	13	\$ 845.00	
Total Life Members		400		
TOTAL for 2015 Membership			\$ 16,730.00	

Life Member Fund Balance as of March 31, 2015 \$ 103,886.91

The two year term for the members of this committee has come to an end. It has been an honor to serve the club as chairman of this committee. My thanks go out to the other two team members, Gail Harrower and Andy Selking. I could not have done this job without their help, I would also like to thank Lori Plummer and the staff at Jackson Center for all of the work they has done to make this position much easier for our committee.

As promised at the Winter IBT meeting earlier this year, this committee has several motions that, if passed, will make the fund more attractive to members and insures a healthy future for the lifetime membership fund.

Respectfully submitted,

Richard Girard – Committee Chairman
Gail Harrower – Committee Member
Andy Selking – Committee Member

TO: Joe Perryman, President, the 2014-2015 International Board of Trustees and WBCCI
FROM: Marque Mooney, Chairman, National/Special Event Standing Committee
DATE: June 24, 2015
SUBJECT: National/Special Event Standing Committee Report

1. The following is the National Rally Report for the period January 1 to June 1, 2015:

Region	Rally	Type	Dates	Units	Financial Report (Profit/Loss)
9	Texas Vintage Rally	National	April 30-May 4	85	

2. The following are the National and Special Event Rallies scheduled from June 2 to December 31, 2015:

Region	Rally	Type	Dates
11	Santa Fe Experience	Special Event	July 8-12
3	Galax Old Time Fiddlers Convention	Special Event	August 2-8
10	Potlatch & Salmon, WA	National	August 3-9
11	Yuma Old Threshers	Special Event	September 10-13
10	Pendleton Round-Up	Special Event	September 14-20
11	Antelope	National	September 23-27
4	Swiss Festival	National	Sept 26-Oct 4
6	Storytelling Festival	Special Event	Sept 30-Oct 4
11	Albuquerque Balloon Fiesta	National	October 3-7
12	Rose Parade	Special Event	Dec 28-Jan 1

I would like to remind all Rally Chairman that you have 30 days from the end of your Rally to get your Rally Reports turned in to headquarters.

Thank you, President Perryman, for the privilege of serving WBCCI.

Committee Report S
Farmington, New Mexico
June 25th, 2015

TO; President, Joe Perryman, 2014-2015 IBT and WBCCI Members
FROM: Hazel Knopp, Chairman, Public Relations/Rally Promotions Standing Committee
DATE: June 25th, 2015

Beginning immediately after the 57th International Convention/Rally promotion of the 58th International Convention/Rally in Farmington, New Mexico began.

Eight articles directed at promoting the area around the Rally site and activities at the Rally were presented for publication in the Blue Beret and the WBCCI Website. These articles included articles from Anne Werth of the New Mexico Unit and her guest writers Nancy Werth and David Weddle. An excellent article was provided by Howard Lefkowitz, Technical Support Standing Committee Chairman with information on the various seminars to be enjoyed at the Rally. Articles by the ECC in the News and Views and on the Websites including information by Teresa Taylor on various tours available at the Rally were presented and provided good overall coverage for the Rally. Support of the Public Relations and Rally Promotion is appreciated and thanks extended.

Registration information for the Rally was highlighted in the Blue Beret and at the various available online contact points. Review of the various Unit and Region Newsletters received by this Chairman indicated good coverage and encouragement to register and attend the Rally.

This year Airstream Corporation, with comments about WBCCI received good coverage on NBC Television and in the Washington Post. Excellent coverage of the Region 10 Rally and the Oregon Unit was aired on Oregon Public TV and Field Guide program highlighting the Club and the benefits of membership in WBCCI.

In May information in the form of the WBCCI Media Kit in print and by DVD was sent to the two local area News Media outlets and the local Television Station, it is anticipated we will have good community support during the time at the Rally in Farmington, New Mexico.

Respectfully submitted
Hazel Knopp

WBCCI TECHNICAL COMMITTEE Program for 2015-2016

&

International Committees 039 & 169 Reports

Committee Members: Howard Lefkowitz	#6077	Chairman
Chuck Helwig	#2868	Safety Officer
Phil Broomall	#2654	
Jim Cooper	#3056	
Charlie Burke	#5631	

The committee provides a continuing technical support program to assist the members and publish articles in the Blue Beret. We average about 50 contacts each month by mail, telephone or Email. Our program for the 2015 International Rally includes the following seminars:

1. THE CARE AND FEEDING OF YOUR RV

The purpose of this Seminar is to help you be prepared with spare parts, special tools and the knowledge to minimize any unhappy experiences the next time you use your RV. Even if you are a klutz and have no ability to do any repairs you can usually find several helpers who will be happy to assist you. However, you are responsible for having the spare parts and unusual supplies that are necessary for your RV. A little education can go a long way to minimizing repair costs and providing extra funds to buy that new gadget.

i will address both Trailers and Motor Homes that overlap in many of our most important appliances. I will also examine some of the unique aspects of these two RV types.

It is called Preventive Maintenance and it works. If you always wait until something fails before you repair it, you are doomed to breakdowns, usually at the most inopportune times. **If it ain't broke, don't fix it.** The Service Shops just love these people. Try fixing things before they break for a change. If wheel bearings last 100,000 miles than lets change them at 95,000 miles. I remember a Caravan where one of the tow vehicles lost an entire wheel while traveling on a side trip. The bearing just fell apart. Of course, it was a front tire. The Air Streamer did not understand how this could have happened since he had faithfully repacked the bearings at the recommended intervals for the last 125,000 miles. I tried to explain that this did not insure that the bearing would last forever. Wheel bearings are a constant wear item and will eventually die of old age. I strongly suggested that he have both of the front bearings

changed but he was from the “if it ain’t broke” school. I hope I am not around when the other wheel falls off since that surely will elicit an “I told you so”.

2. BATTERIES, CHARGERS, INVERTERS AND SOLAR SYSTEMS

We use two basic battery types in our RV's:

1. Engine start in a Motor Home or Tow Vehicle (Starter Battery)
2. Coach unit for running 12-volt appliances, lights and various electronic boards (Deep Cycle Battery).

To obtain the best performance and optimum life each of these battery types represents a completely different design. In small boat applications, where there is only room for a single battery, manufacturers have made a compromise design to serve both functions. In our RV's we

have both types. Obviously, the best cost/highest performance batteries will be those optimized for the two separate RV functions.

Chargers

The best chargers provide four stages of computer chip controlled charge current. This type of charger will provide the best battery performance and the longest useful life. They usually have switches and sensors to optimize charge parameters for different types of deep cell batteries and the ambient temperature. This allows you to keep the batteries on continuous charge. If you have a source of shore power your batteries can be left in the RV during the winter months with no danger of freezing. Once I changed to a computer chip controller, I have kept my batteries on charge, continuously, since 1989 . They are always charged and ready to go on one of my winter camping trips.

Inverters

The Converters (chargers) described in the last section essentially convert 120 VAC to 12 plus volts DC. An inverter is just the opposite it converts, 12 volts DC from a battery to 120 VAC to run appliances in your RV. It draws amp/hours from the battery system to power the things we would like when we do not have shore power. Some of our appliances work directly from the batteries i.e. water heater, furnace, refrigerator, lights, radio, etc. (some of them with a little help from the propane). Things we would like to have that cannot be run from DC include, hair dryer, coffee maker, toaster, microwave, TV, Hi-fi stereo, computer, vacuum cleaner, satellite TV, small battery chargers for phones and I-pods. Large motor homes usually include combination Converter/Inverter units that provide several kilowatts of AC power as well as a computer-controlled charger. Some of these include multiple large 4D or 8D batteries that can easily power large microwave units. These are built in with all the needed wiring and control circuits available. Several of the appliances are already connected to the Inverter through multiple use receptacles that are also shore powered, when it is available. Adding this capability to a trailer or motor home, after the fact, would be an extremely difficult and expensive undertaking that I do not usually recommend.

Solar Power

When we withdraw amp/hours from our battery vault, we have to return them as soon as we have a source available. This could be shore-power, an alternator (from the tow vehicle or motor home), a generator or a solar panel system. Solar energy is free, however, collecting and processing it is expensive. Let us examine a typical system and determine the costs, efficiency, system configuration and effectiveness for our individual camping choices.

3. TROUBLESHOOTING AND REPAIR OF WATER HEATERS FURNACES & REFRIGERATORS

One of the key secrets to troubleshooting a piece of equipment is to have some idea about how it works. We usually know what the input and output are supposed to be but have no idea how we get from here to there. A water heater takes cold water and delivers hot water using propane; a furnace provides hot air using propane; an air conditioner provides cool air using 120 VAC; a refrigerator provides cool and frozen food using propane or 120 VAC or sometimes 12 VDC; a generator provides 120 VAC from either gas, diesel or propane; a charger keeps our batteries working properly using 120 VAC or an alternator; an inverter changes our 12 VDC into 120 VAC; a solar panel helps keep our batteries charged using sunlight; etc., etc.

We take all of this equipment, stick it into a box, leave it outside all year long and subject it to extremely hot and cold temperatures. We dump water and dirt all over it and then periodically shake the heck out of it. No wonder our RV appliances and equipment constantly need care and feeding. Lots of little critters like the smell of propane so they build nests in the equipment that can block the flow of air or gas. Exposure to the weather and dirt can cause short circuits on printed circuit boards. Occasionally, manufacturers may have done a poor design or used an unreliable component that will eventually cause a failure. I know it's hard to believe but some of us might actually not take care of our expensive RV systems (sometimes referred to as MAINTENANCE) resulting in failures at the most inopportune times.

In this Seminar, we are going to cover Water Heaters, Furnaces and Refrigerators. This is not intended to be a detailed step-by-step troubleshooting manual for a technician. We will provide a basic outline of how the equipment works, maintenance you should be doing on a routine basis and an outline of what usually goes bad. Many of you should be able to do the simpler repairs yourselves and gain some knowledge in order to make the decision when you need to visit a professional repair shop.

4. TROUBLESHOOTING AND REPAIR OF YOUR AIR CONDITIONING SYSTEM

To cool your RV you must remove the heat from inside the vehicle and release it to the outside air. This process is essentially the same for your RV, automobile or house air conditioning system. The components may be somewhat different but the functions performed are identical. You require some refrigerant that can be pressurized and then converted to a liquid (usually Freon).

Getting the cool air inside the RV and the heated air outside is accomplished by circulating the Freon through two sets of coils (similar to your water based automobile radiator). By blowing on the coils with two fans, the cool inside air can be circulated in the vehicle while the heat removed from the RV is discharged to the outside. Figure (1), illustrates the basic components of a home air conditioning system. Since we are constantly discharging the warm air (externally) and circulating the cold air (internally), we only need one motor to drive both fans. A squirrel-cage fan blade is used to circulate the high airflow inside (cool air) and a conventional fan blade for the outside (hot air) discharge. The compressor does the main work by circulating the refrigerant in order to provide the heat transfer. The evaporator, condenser and refrigerant are all part of an inter-connected sealed system that is usually not serviceable. The compressor itself is also a sealed unit with no serviceable parts. An internal failure usually means replacement of the complete unit. After about 15 to 20 years if your compressor has failed, it is time to replace the entire A-C unit.

5. SETTING UP A TYPICAL TOWING SYSTEM

This seminar will provide guides for selecting the hitch, determining the correct ball mount height, selecting the weight distribution bar and determining the gross trailer tow weight (GTW) and the tongue weight (TW). Selecting a proper tow vehicle and hooking it up correctly will be discussed. Wiring running and turn signal lights, trailer charge lines and brake lines will be presented. Minimizing sway and how anti sway systems can help. How brake controllers work and how to select them. How to adjust an Equalizer Hitch. Making sure your tow vehicle chains, electrical cable and safety brake are set up correctly.

6. HOW TO RUN AN OLD FASHIONED MAINTENANCE RALLY & WHY YOU SHOULD EVERY YEAR

This Seminar will describe, in detail, how to run a maintenance rally. Forms and check off lists will be provided with descriptions as needed. Required tools and chemicals will be detailed as well as the needed methodology. This is set up for a Friday to Sunday Rally with lots of time to provide demonstrations and discuss individual member's special problems. Each member does his own maintenance with the guidance, special tools and fluids provided by the Rally Master. Besides de-winterizing, every participant goes home with a rig that is ready for the coming years Camping events. This Rally is usually run in April.

Open the Rally and invite anyone with an Airstream to attend, meet your Unit members and learn how to effectively use their RV's. They will quickly understand the value of joining WBCCI.

7. TRAILER AND MOTOR HOME ROUND TABLE

This is an open discussion of any topic of concern to the members. Recent discussions have included:

1. Major safety concerns of refrigerator recalls
2. Propane safety and quick-release connections
3. Fire, Propane and Carbon Monoxide safety sensors
4. How to determine the Proper RV tire pressure
5. How to test your breakaway switch
6. Proper hook-up of a Motor Home towed vehicle
7. Repair of the primary tow vehicle electrical cable
8. Selection of Motor Home brake controllers
9. Deciding when you need a professional repair technician
10. How to control trailer sway.

All of the Seminars are available for download on the primary WBCCI Caravan Web site. A new section for Motor Homes has been added to the web site and will be continued.

The new seminar to be added for 2015, **'How to run a Maintenance Rally'** and **'Why Every WBCCI Unit Should Have This Rally Every Year'** will be an excellent tool for attracting new Airstream owners to our club as well as keeping them involved. Our **'customers'** want to learn more about their Airstreams and this is what WBCCI should be providing.

The committee will continue to provide assistance in the publicity and selling efforts for the 2015 International Rally.

Howard Lefkowitz

Committee Chairman Report U
Farmington, NM
April 30, 2015

To: President Joe Perryman
International Board of Trustees

From: Gail Harrower, Chair
Vern Zink, Don Thomson, Chris Wells, Linda Agre and Jerry Larson,
Committee Members

Subject: International Peace Garden Monument Project

The six foot high monument of polished stainless steel is nearing completion at the foundry in Utah. Art Norby, the well known sculptor from New London, MN has been monitoring its progress throughout the winter months from Arizona.

The International Peace Garden is gearing up for the arrival of the granite base - which signifies the first step in the placing of the monument. The granite base is shaped out of a thick piece of Iridian Granite which is a very light grey with tiny black flecks in it - from a distance it looks nearly white but when wet with water or spray darkens in appearance. Next to the polished stainless steel monument it is striking. The selection of this granite for the base was approved by Professor Emeritus Charlie Thomsen of the University of Winnipeg Department of Landscape Architecture. The base, according to the Professor, had to be round in an oval shaped pool 40.5 inches in diameter; 5.5 inches deep with thermal surface and edges; 4 anchor holes and orientation markings.

The monument was originally to be cast in two large pieces and for structural integrity and ease in polishing it was decided to make it into smaller pieces. The foundry and artist Art Norby's expertise and judgement will provide us with an exceptional product.

There will be a further update on this project presented at the IBT Seminar on June 25th and will include pictures of the granite base and hopefully the monument itself. Your support of this project needs to continue. Remember, 100% of all donations are income tax deductible, and we will be accepting donations during the International Rally in Farmington. With your help, we can get this done!

Respectfully submitted,

Gail Harrower, chair

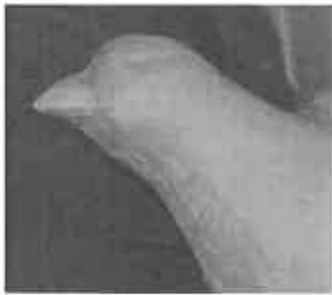
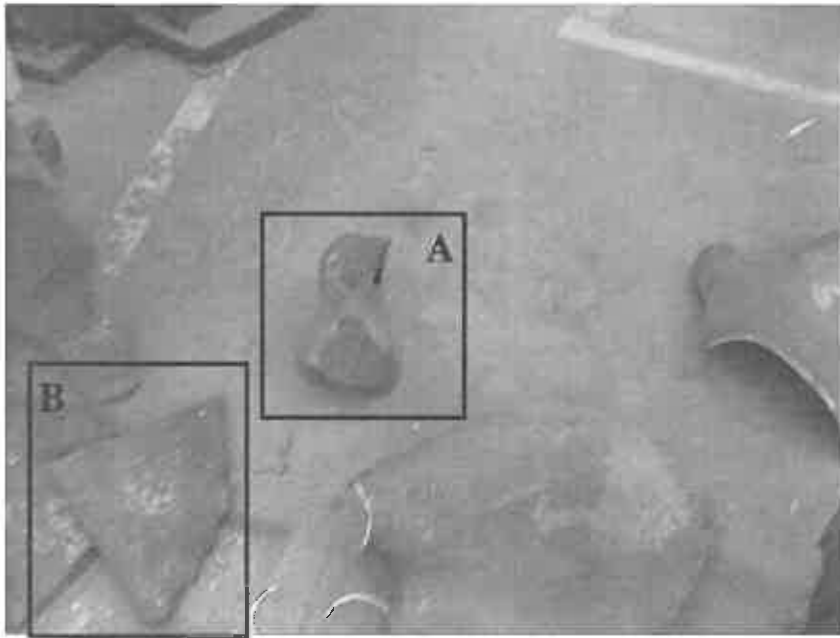


To the left is a piece
from the base of
the hands
(refer to picture below).

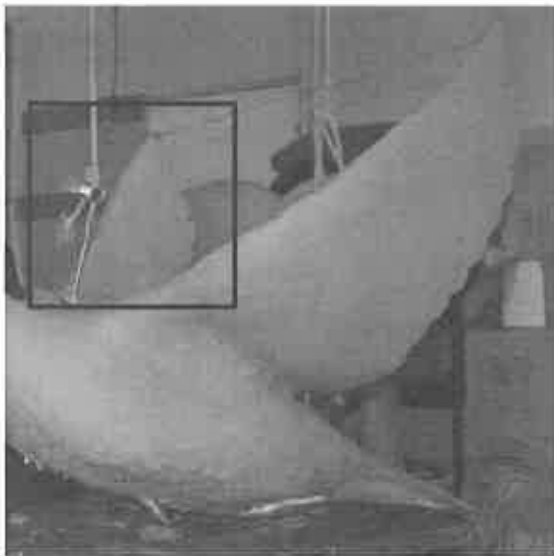


You can see the
difference between
the polished piece of
the base of the
hands on the right
of the picture.





In Box A, you can see the beak of the Dove



In Box B, you can see the tip of one wing of the Dove

June, 2015

To: WBCCI International Officers
Members of the International Board of Trustees
General Membership of WBCCI

From: WBCCI Amateur Radio Club Intraclub
John Green, President 2014-15

Subject: Report of club activities July 1, 2014 through June, 2015

The WBCCI Amateur Radio club continues to enjoy membership growth and increased member activity during the report period. Club membership now stands at 364, an increase of 29 members since our previous report dated January, 2015. Financially, the club's treasury balance stands at \$9,685.00. The membership growth may be due to renewed emphasis on amateur radio as an essential communications resource serving the general public during natural disasters and as an improved communications channel for RV travelers

The club assisted the Caravan committee by revising outdated language in the Caravan handbook pertaining to amateur radio. Suggested revisions were provided to the Caravan committee chair for inclusion in the revised handbook which is planned for distribution at the 2015 International Rally in Farmington, NM.

The club supports an auxiliary service named RV Service Nets (or network). These nets meet via amateur radio 364 days a year and provide all RV minded amateurs a known location where essential messages may be sent or information obtained about the club.

We continue to be challenged by the need to recruit new leaders and officers for the club. At the present time, we have successfully filled all officer positions.

It should be noted that the Director of the U.S. Federal Emergency Management Agency recently identified amateur radio as an essential resource of volunteer trained communicators who willing use their own time and equipment to serve the public. On a personal level, my Airstream trailer and my amateur radio equipment are included in the assets of my local county emergency management agency. We consider our access to the radio frequencies granted through our FCC licenses to be one of the reasons we willingly serve the public in times of disaster when the normal communications channels may be inadequate or compromised.

Finally, our club is aware that its Intraclub status is being reviewed as a potential cost saving measure for the annual International Rally and Convention. As I explained above, the club and its members represent a worthwhile asset to the entire organization and the privileges extended to the club because of its Intraclub status are commensurate with its ability to supply essential communications services should the need arise.

Respectfully submitted,

/s/ John W. Green

John W. Green, President 2014-15
WBCCI Amateur Radio Intraclub

To: Joe Perryman, WBCCI International President
International Board of Trustees
WBCCI Members

From: Matt Hackney, Chairman
Special Committee for Improvement of International Rally Site Selection

Date: April 24, 2015 for June IBT Meeting, Farmington, NM

As President Perryman instructed, this committee looked at the methods used by the WBCCI to select and secure International Rally Sites. We received input from the International President and International Vice Presidents. We also received great insight from Norm Beu, International Past President and member of this committee.

We strongly recommend that the IBT adopt three motions we are presenting, aimed at providing a much stronger process for site selection and negotiation. We believe that the current process provides the International 3rd Vice President with little corporate assistance in his search for a rally site. We further believe that this organization has many talented and experienced individuals who can provide invaluable assistance in identification of criteria, evaluation of locations, and negotiation of contracts. We also believe that the needs of the organization are best served by providing a feedback mechanism from the International Rally Committee Chairmen to the selection process. We also believe that the 2nd Vice President could benefit from input and information on past contracts, as well as assistance in negotiations with rally sites. Our motions provide a framework to address these issues.

In our work, we have identified a significant body of information which, assuming these motions are approved, will be provided to the new committee members. In addition, several of our committee have recommendations for future members of the International Rally Site Committee and would be happy to discuss those with the Executive Committee as they choose their appointees.

Finally, we believe there are additional opportunities which can (and should) be addressed in the near term via similar Special Committees. Unfortunately, the short timeframe between the Mid-Winter IBT and the June IBT limited us to only a single area of focus. We strongly recommend that committees be formed to look at two additional areas which we believe can benefit from a focused evaluation:

- 1) Conduct of Meetings - shortening the duration by updating our process. This effort would focus on reducing costs, using technology, improving communications, and reducing meeting costs as much as possible.
- 2) Conduct of Rally - re-thinking our purpose for the International Rally. Based on the tenets of Fun, Friendship, and Adventure, we should consider altering

the number and structure of committees and our schedule. This effort would align the committee structure and ensure changing needs of rally are appropriately considered. It should ensure purpose and structure of the rally meet the needs of the members and attendees.

We would like to thank you, President Perryman, for the opportunity to work on this important issue. We hope the members of the IBT will give our recommendations due consideration and welcome your questions.

Respectfully submitted:

Norm Beu
Ernie Bauer
Robert Stansbury
Don Hetzler
Matt Hackney